

## Year 6 Autumn Unit: The North and South pole

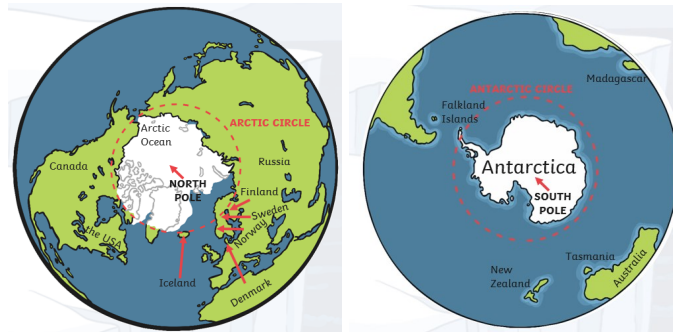


**Enquiry Question:** What are the similarities and differences between the North Pole and the South Pole?

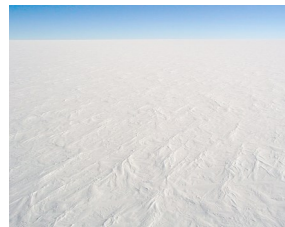
**Geographical Concepts:** boundaries, cartography, change, climate, movement, physical geography, resources, settlements



*A map showing the two polar regions*



*There are deserts at the North Pole and the South Pole called the Arctic Desert and Antarctic Desert.*



*An example of permafrost*

### **Retrieval Unit Vocabulary**

adapted, area, climate change, continents, country, desert, latitude, lichen, longitude, moss, North Pole, region, sedges, South Pole, temperate, temperature, thermometer, vegetation

### **New Unit Vocabulary**

**Arctic Circle** - The Arctic Circle is one of the two polar circles, and the most northerly of the five major circles of latitude as shown on maps of Earth

**Nomadic** - living the life of a wanderer with no permanent home

**Opportunistic** - exploiting immediate opportunities

**Permafrost** - a thick subsurface layer of soil that remains below freezing point throughout the year

**Scarcity** - in short supply

**Tundra** - a vast, flat, treeless Arctic region

### **Primary Focus - Locational Knowledge**

In this unit, Year 6 will learn to

- identify the position and significance of latitude, longitude, Equator, Northern Hemisphere, Southern Hemisphere, the Tropics of Cancer and Capricorn, Arctic and Antarctic Circle, the Prime/Greenwich Meridian and time zones.

### **Secondary Focus - Geography Skills and Fieldwork**

In this unit, Year 6 will learn how to

- use maps, atlases, globes and digital/computer mapping to locate countries and describe features studied.

*The lines of latitude and longitude, including the Prime Meridian line.*

